



VALTIOVARAINMINISTERIÖ

RTE-seminar

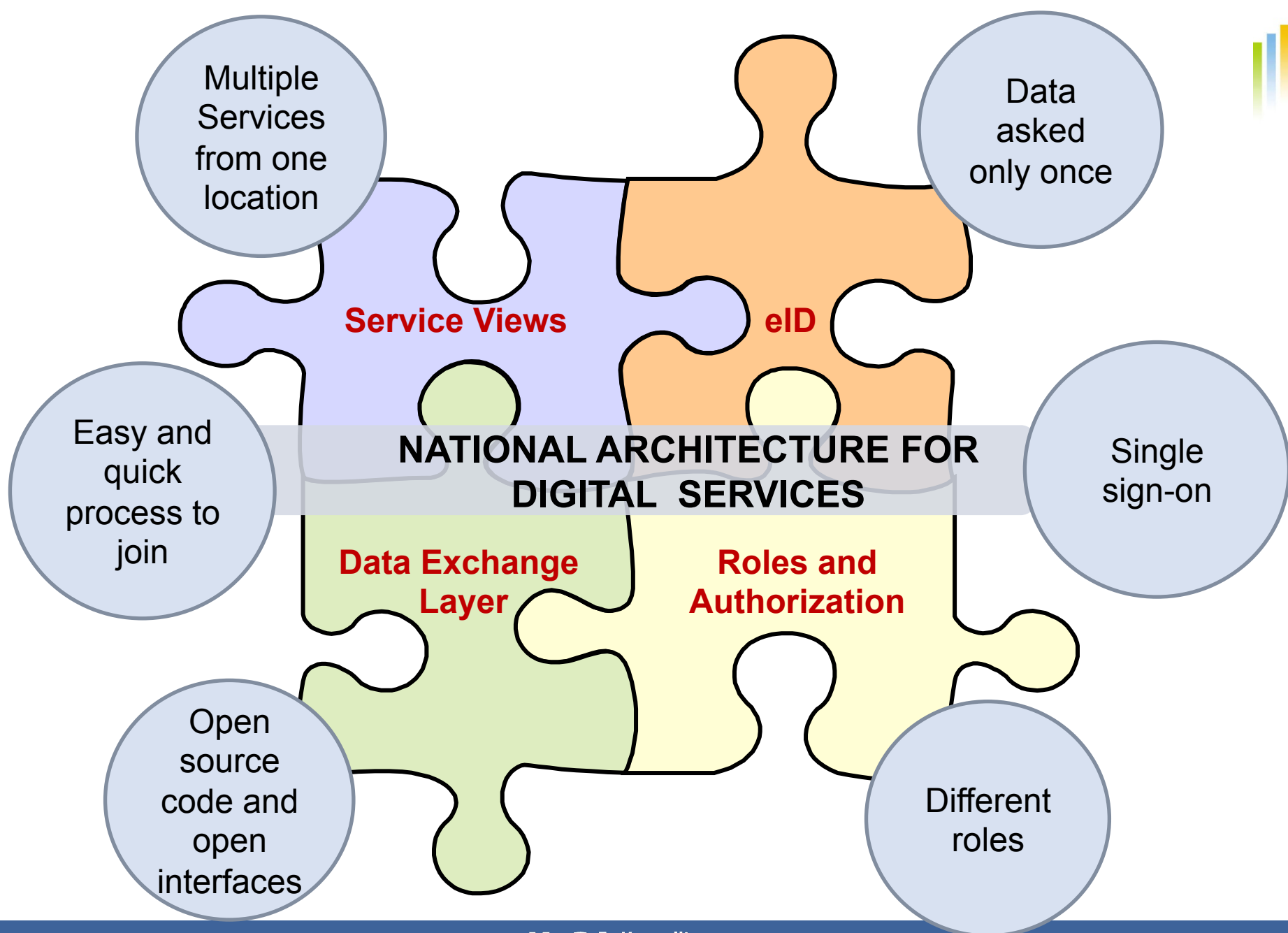
Finnish National Architecture for Digital Services

10.4.2015

Pauli Kartano

Ministry of Finance, Public Sector ICT

KaPA Kansallinen palveluarkkitehtuuri





National Architecture for Digital Services

Program creates digital infrastructure, which enables

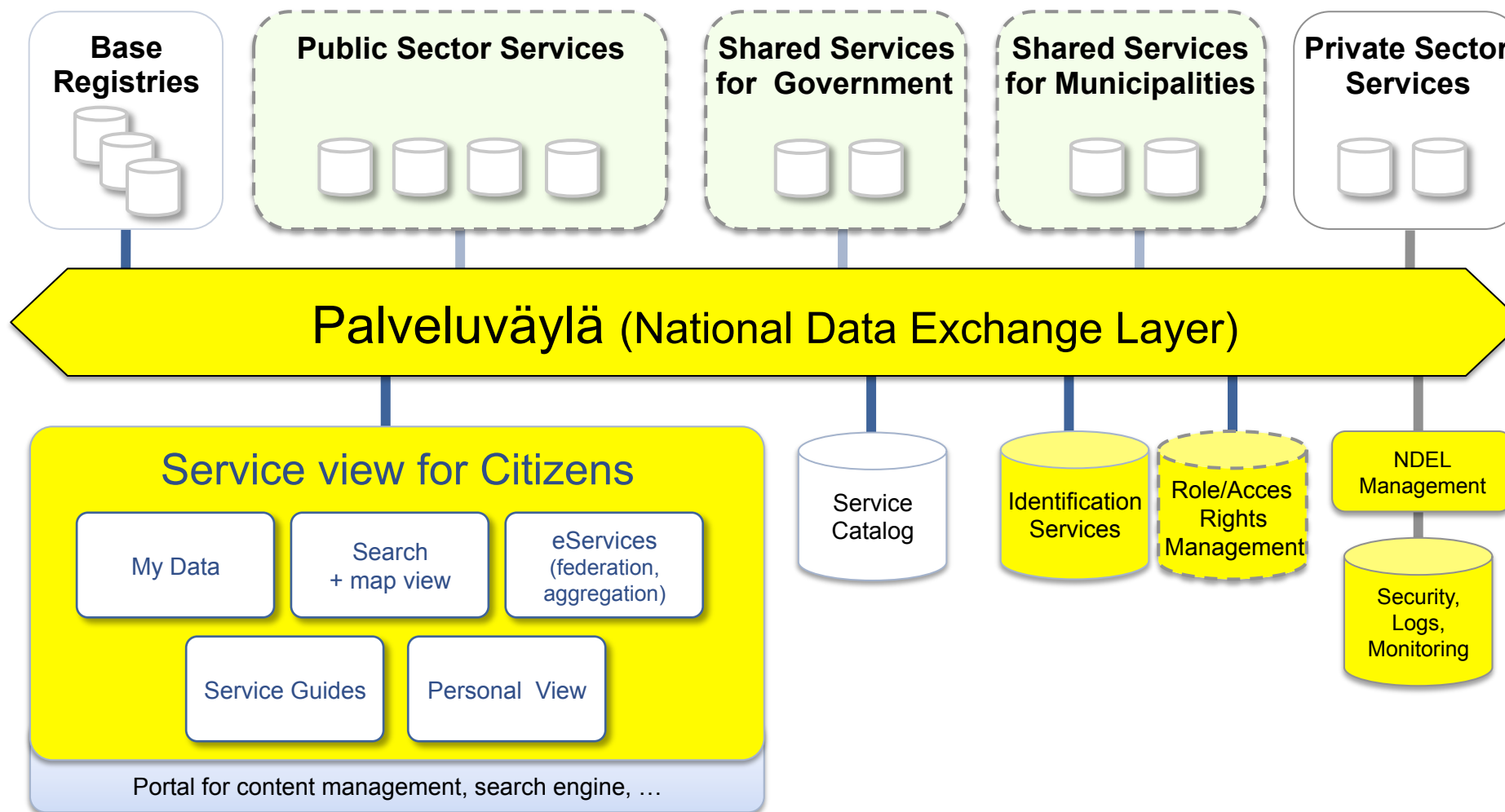
- Easier data exchange between organizations and services
- Enhanced service development
- New services



Which leads to

- More efficient public sector
- Better Public Services
- Business Opportunities for companies

National Architecture for Digital Services 2014-2017





Service View Prototype

Kansalaisen palvelunäkymä:

- <https://www.youtube.com/watch?v=ZsQAeRGuIPM>



Palveluväylä is

- **Data exchange concept**, which aims to increase information exchange between organizations and to support service development
- **Distributed data exchange layer**, which offers standardized and secure way to publish and use databases and services



Palveluväylä as a concept

- Tehcnology only a small part of the entity
 - Palveluväylä as a data exchange layer
- New approach for service development
 - Using common/shared solutions
 - Focus on core duties
 - Everybody doesn't need to do everything
 - Utilizing existing solutions
 - Information/data in key role (shared use, no redundancies)
 - New ways of doing things



Benefits to the organizations

- Other organizations data easier to use
 - Enables business development
 - Decrease redundancies
- Organizations own data easier to use for others
 - Value of the data increases
- Integrations more straightforward
- Support for joiners
- Benefits increase rapidly when more information on offer and more services active



How to join?

- Program offers support
 - Financial support for public sector
 - Planning and integration supported, not creation of the service itself
- Packaging
 - Documentation, guidelines
 - Use cases
- More info: Palveluväylä.fi



Public Sector Reference Group

1. Supports implementation of the Service Views and Service Catalogue.

Producing Service info to the Service Catalogue

2. Influences beta.suomi.fi development and brings ideas from service providers

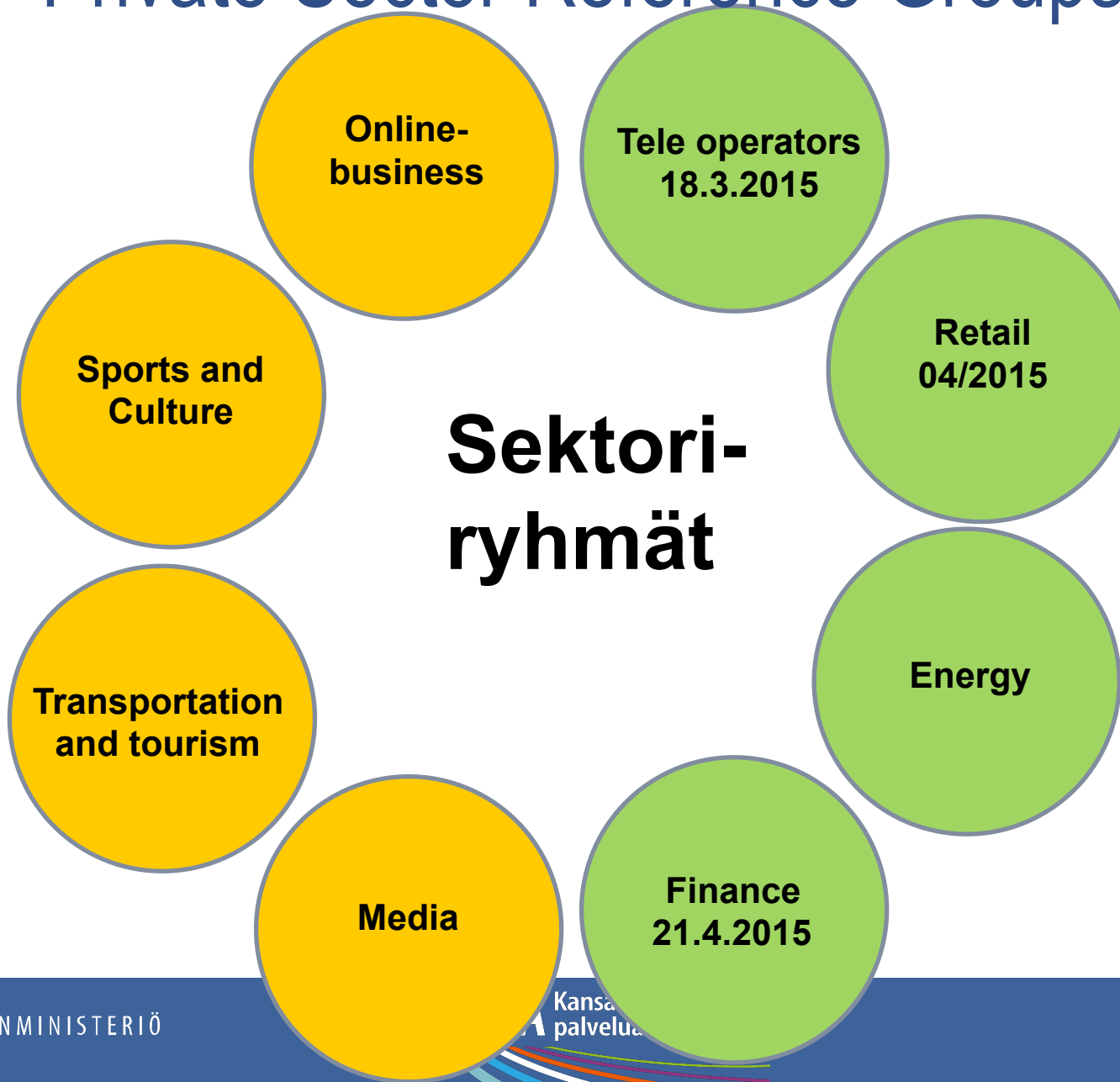
Displaying own information on the Service View

Contributions developing functionalities



Private Sector Reference Groups

FALL
2015



SPRING
2015



Private Sector Reference Group

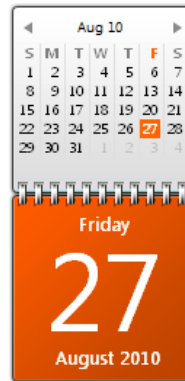
1. Get Private Sector Services into beta.suomi.fi

2. Gather feedback about beta.suomi.fi development and ideas for new functionalities.

What Kind of Services Are the Most Interesting?



**Services that
a lot of
people need**



**Frequently
Needed
Services**



**Easy to
Integrate**



Who to Contact?

Service Manager

Jani-Matti Kaukonen

jani-matti.kaukonen@vrk.fi

Mobile: 050 565 1377



Thank You

esuomi.fi

palveluväylä.fi

[@vm_kapa](https://twitter.com/vm_kapa)

[#palveluarkkitehtuuri](#) [#palveluvayla](#) [#esuomi](#) [#sähköinentunnistus](#)
[#palvelunäkymä](#)

Pauli Kartano

JulkiCT

[pauli.kartano\[at\]vm.fi](mailto:pauli.kartano[at]vm.fi)

+358 29 55 30486